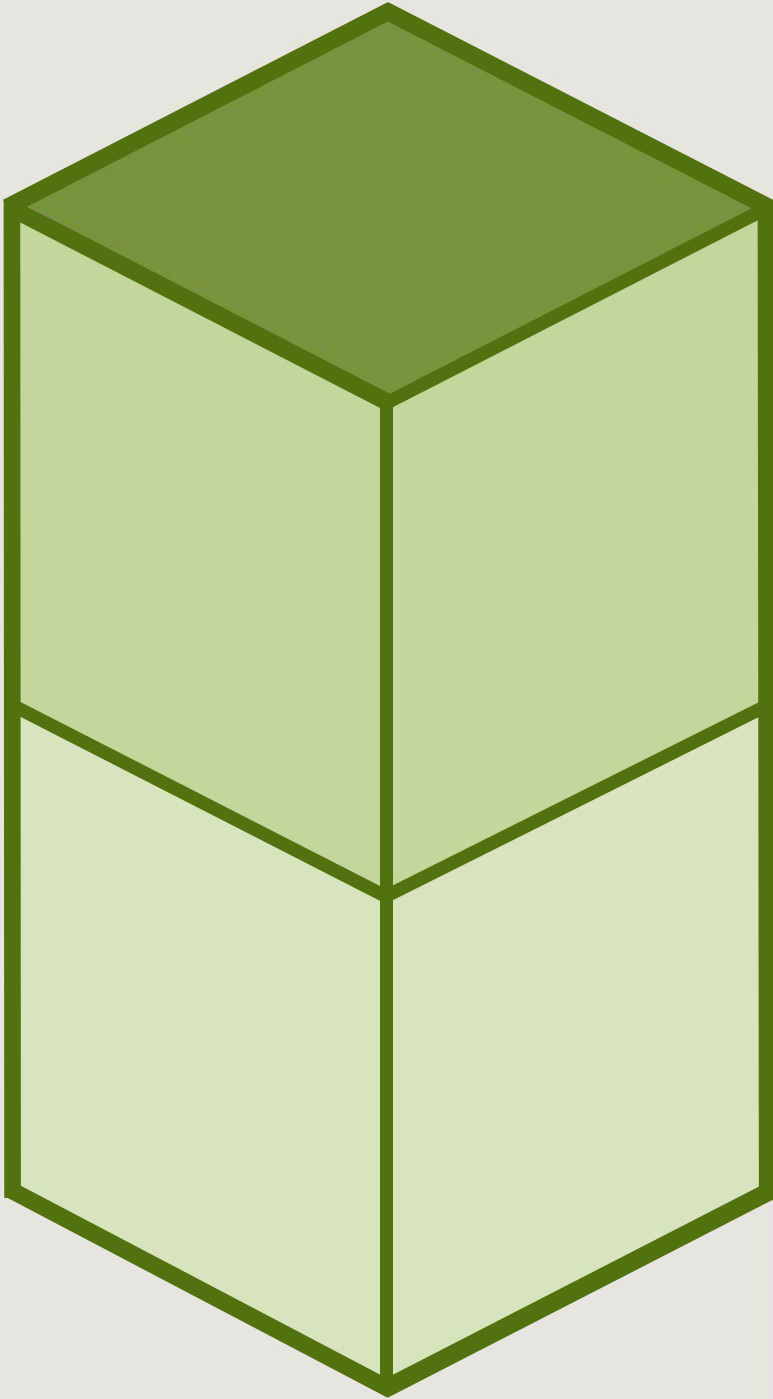




**Twinkle**

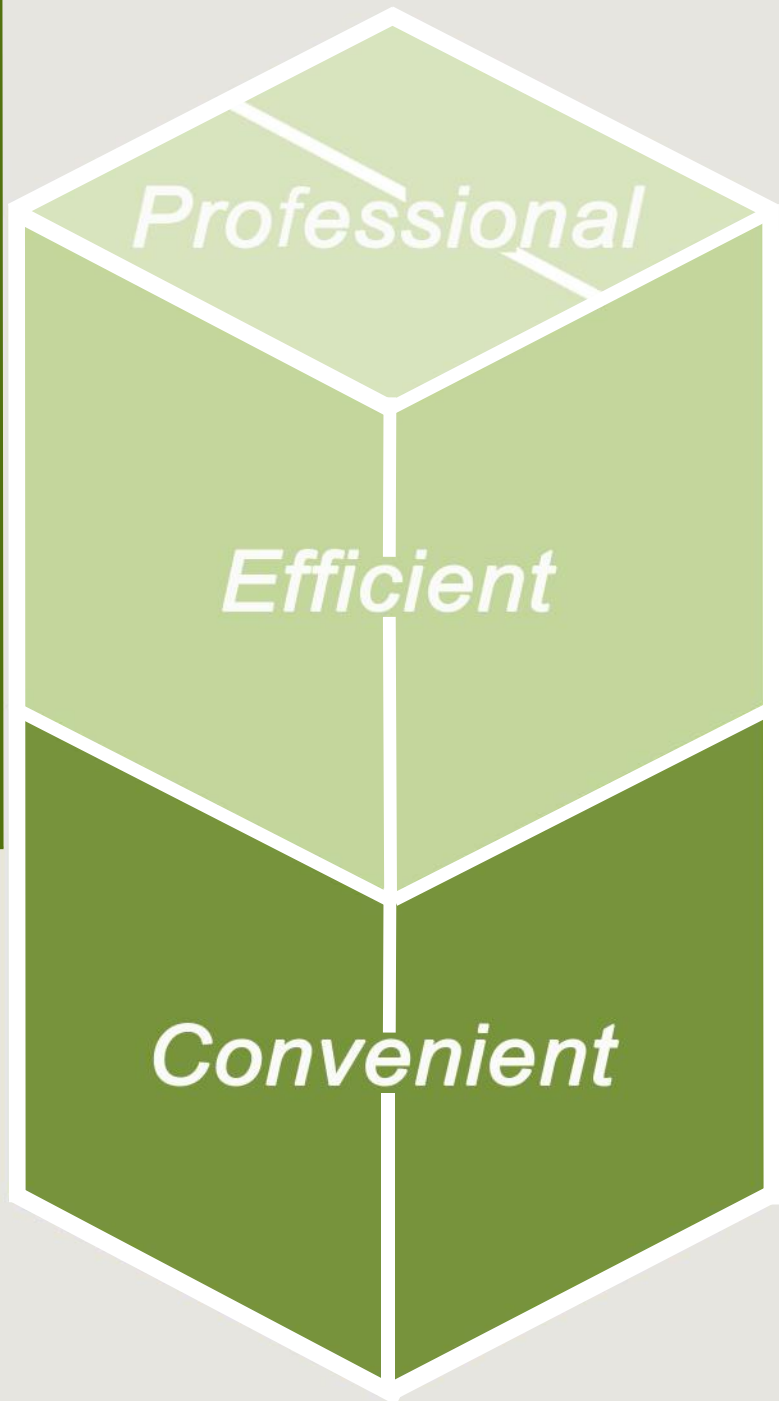
Since 2012



*Professional*

*Efficient*

*Convenient*



## Company Profile公司介绍

Founded in 2012, Twinkle Packaging is one of company committed to eco friendly packaging materials for catering and relative industry for 10 years. All our products are made by recycled material and biodegradable material. We have all range aluminium foil products and biodegradable cutlery. Twinkle Packaging passed ISO 9001:2015 certificate which could help us trace our products from very beginning to end user side. In order to provide our best service to our customer, We set up our own brand: Foilinap and Greenpack in abroad and domestic market.

Our products include aluminum foil sheets and containers , biodegradable & biobased cutlery pack, biodegradable disposable products , paper wrapping products etc . The products can be used for food packaging industries, hairdressing and nail treatment shop, household using etc. All products are made from environmentally friendly materials, they are safe and professional.

Commitment And Aim: We offered are not products but satisfaction.





Professional专业 Efficient高效 Convenient便捷

# Management System 管理体系证书



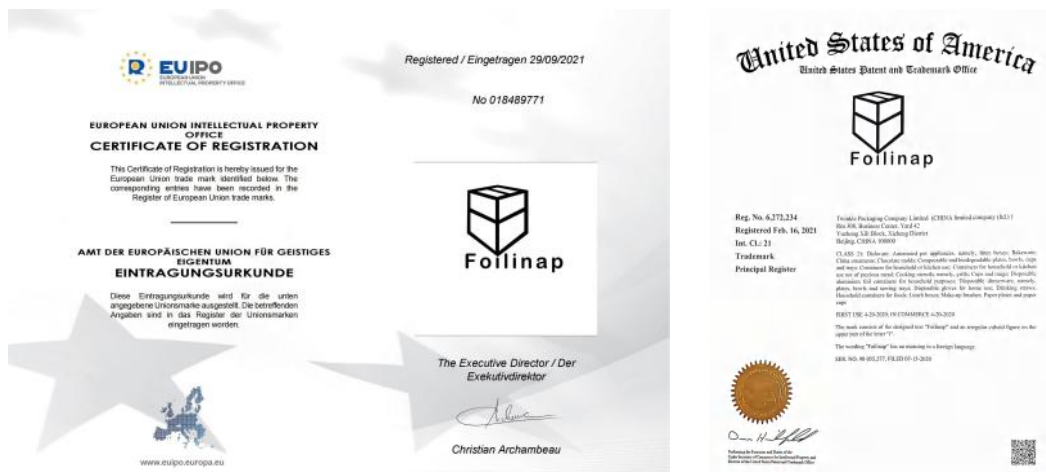
ISO9001:2015  
Quality Management System  
质量管理体系

ISO45001:2018  
Occupational Health And  
Safety Management System  
职业健康安全管理体系(中文)

# Test Report 检测报告



# Registered Trade Mark 商标



## BAMBOO 竹制品系列



# PACKAGING FOR REAL CHANGE

Our innovative and extensive portfolio of plant based takeaway inspired by the need to environmental footprint change for good.

The range is made from sustainable renewable raw materials and is either compostable or recyclable, without compromising on function or quality. All items in the range are certified compostable to international standards.

Sustainability needs to be simple and we are committed to a world where we put waste to work. One use at a time.

Join us and make one BIG Small change.

The Twinkle BAMBOO logo features a stylized bamboo cube icon above the word "Twinkle" in a bold, green, sans-serif font, with "BAMBOO" in a smaller, green, sans-serif font below it.

# ARE YOU IN THE LOOP?



Striving for a sustainable world and delivering a circular economy means that we have to consider the real and growing impact of food soiled packaging that is not suitable for recycling. In fact, when directed to landfill the methane gas produced as food breaks down is a very significant contributor to global greenhouse gas emissions.

By choosing compostable packaging you can help to change this, as composting can be considered nature's circular economy—turning food scraps and compostable food soiled packaging into nutrient rich compost that can be used to improve soil diversity and support a healthier planet.

Our range of compostable packaging is made from plants and by choosing it you can play your part to support the plants of tomorrow and take-away the waste.

Join us and make one BIG small change.

**Bamboo fiber**, cellulose extracted from naturally growing bamboo, which contains a special component that is against bacterial and odor, it also absorbs moisture and good for health. After several technology processing then formed into a variety of products from small portion cups through to large catering trays.

This renewable and reclaimed resource is a strong alternative to traditional plastics or polystyrene.

Our complete bamboo fiber range is certified compostable and has the benefit of being breathable, cut and grease resistant and able to go in the microwave or oven, meaning your food stays hot and crispy.

We always recommend oven testing to ensure suitability for your operating conditions.

### Performance Features

- 1 Breathability keeps foods crisp
- 2 Retains temperature
- 3 Microwaveable and freezable
- 4 Ovenable to 200 for 40 minutes
- 5 Hot an cold food friendly
- 6 Grease and cut resistant
- 7 Texture helps containers stack without sliding
- 8 Won't melt and no liner needed-hot food can go straight in from the fryer
- 9 Customizable-print or emboss
- 10 Can be top sealed(subject to item shape)

### Environmental Benefits

- 1 Made with rapidly renewable resources
- 2 Natural degradation in 90 days



## BAMBOO FIBER PLATES



Available in a range of sizes and styles including multi-compartment options, these bamboo fiber plates are strong and sturdy and can go from freezer to microwave or oven.



6inch Plate  
152.4XH15  
Natural / 10Ctn / 1980pcs/ctn



7inch Plate  
178XH15  
Natural / 10Ctn / 1260pcs/ctn



9inch Plate  
231XH18  
Natural / 10Ctn / 500pcs/ctn



10inch Plate  
260XH22  
Natural / 10Ctn / 400pcs/ctn



9inch 3 comp Plate  
231XH18  
Natural / 10Ctn / 460pcs/ctn



10inch 3 comp Plate  
260XH22  
Natural / 10Ctn / 350pcs/ctn



## BAMBOO FIBER BENTO BOXES



Rectangular, boat shape with separates combine bamboo fiber recycled PET (RPET) or PP lid for maximum strength and optimum presentation.



16oz(450ml)Square box  
W171XL104XH40  
Natural /10Ctn / 800 pcs/ctn



17oz(500ml)Square box  
W170XL115XH40  
Natural /10Ctn / 1000 pcs/ctn



17oz(500ml)Square box(with lid)  
Natural /10Ctn / 500 pcs/ctn



28OZ(850ml)Bento box  
L233XW135XH47



30OZ(900ml)Bento box  
L232XW135XH55



Bamboo fiber lid



38OZ(1100ml)Bento box  
L232XW133XH60  
Natural /10Ctn / 630 pcs/ctn



34OZ(1000ml)Bento box  
L232XW133XH60.2  
Natural /10Ctn / 630 pcs/ctn



Transparant PET lid



## BAMBOO FIBER CLAMSHELLS



6 inch Clamshell

L152\*W303\*H50

Natural/10Ctn/630 pcs/ctn



8 inch Clamshell

L406.2\*W203.2\*H42.4



9 inch 3 comp Clamshell

L463\*W235\*H58



900ml Clamshell

L245\*W322\*H53



900ml 2 comp Clamshell

L245\*W322\*H53



## BAMBOO FIBER LUNCH TRAY



4 or 5 separates combine bamboo fiber recycled lids are suitable for lunch food, fruites and nuts, flavor will not be mixed.



Bamboo fiber lid



4-comp Tray  
L230XW168XH30  
Natural /10Ctn / 400 pcs/ctn



5-comp Tray  
L202XW247XH40  
Natural /10Ctn / 280 pcs/ctn



5-comp Tray  
L202XW247XH40  
Natural /10Ctn / 360 pcs/ctn



## BAMBOO FIBER CUTLERY



Bamboo straw(oblique cut)  
6 \*210mm  
Natural / 10Ctn / 4000pcs/ctn



Bamboo straw(oblique cut)  
8 \*210mm  
Natural / 10Ctn / 4000pcs/ctn



Bamboo straw(oblique cut)  
12 \*210mm  
Natural / 10Ctn / 2000pcs/ctn



Bamboo straw(flat cut)  
6 \*210mm  
Natural / 10Ctn / 4000pcs/ctn



Bamboo straw(flat cut)  
8 \*210mm  
Natural / 10Ctn / 4000pcs/ctn



Bamboo straw(flat cut)  
12 \*210mm  
Natural / 10Ctn / 2000pcs/ctn



Bamboo knife  
170mm  
Natural / 10Ctn /5000pcs/ctn



Bamboo fork  
170mm  
Natural / 10Ctn /5000pcs/ctn



Bamboo spoon  
170mm  
Natural / 10Ctn /5000pcs/ctn



## BAMBOO FIBER BOWLS&CUPS



Our bamboo fiber bowls and cups are designed for strength and style as well as. Lid include bamboo fiber, and 100% recycled PET and PP options.



10oz(300ml) Bowl

120XH50

Natural /10Ctn / 1280pcs/ctn



17oz(500ml) Bowl

150XH50

Natural /10Ctn / 1260pcs/ctn



34oz(1000ml) Bowl

195XH55

Natural /10Ctn / 250pcs/ctn



51oz(1500ml) Bowl

195XH70

Natural /10Ctn / 300pcs/ctn



Bamboo fiber lid

Natural /For 1000/1500ml



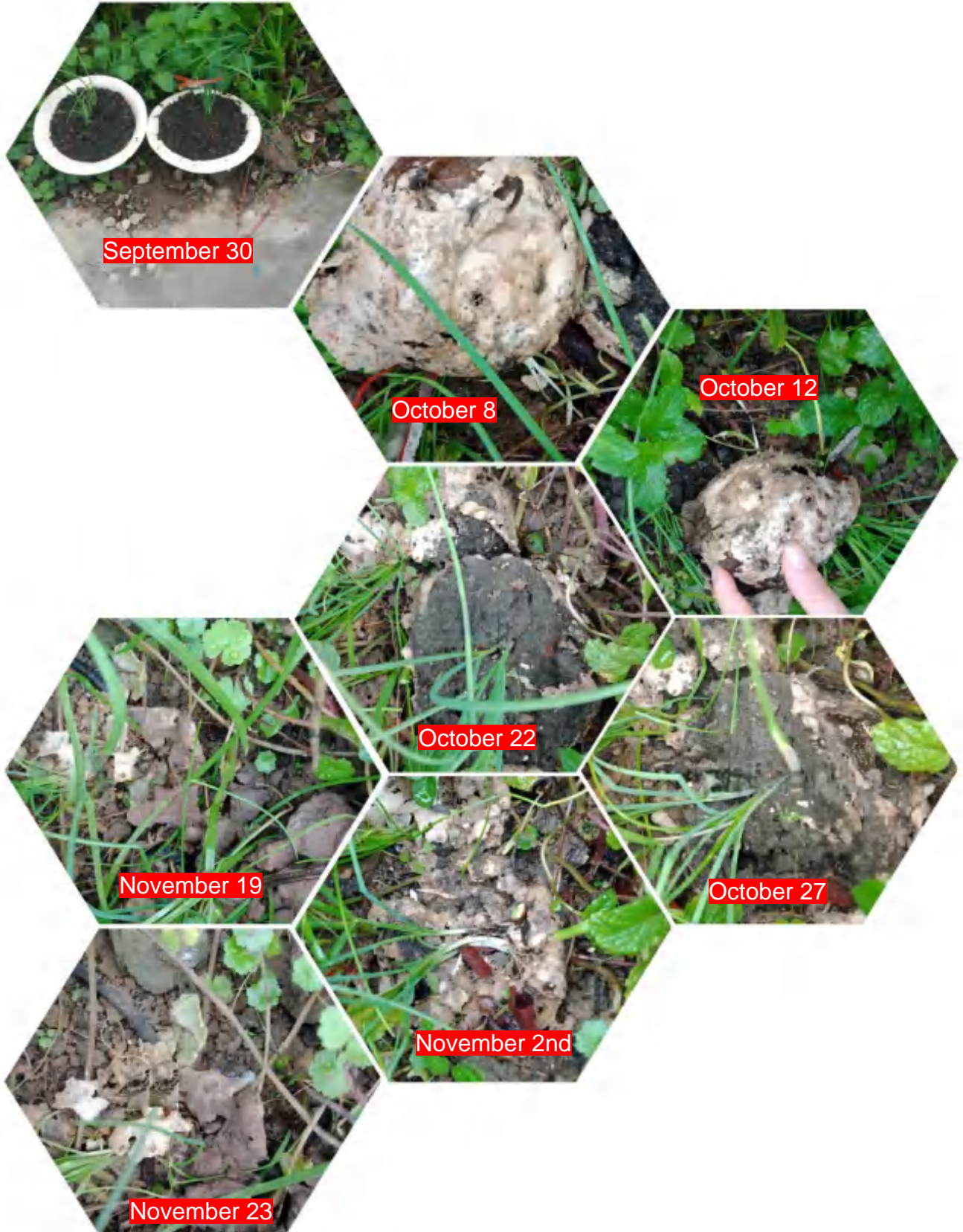
7oz(200ml) Cup

72XH75

Natural /10Ctn / 1350pcs/ctn



## Natural Degradation Example





# Twinkle

*Thanks for watching!*

中国北京市西城区裕中西里42号商务中心405室 100029

Unit 405 ,Business Center, No.42 Yard, Yuzhong Xili Block  
Xicheng District, Beijing, P.R.C(100029)

(86)010 82997767

(86)186 00472653

[info@twinklebj.com](mailto:info@twinklebj.com)

[www.twinklebj.com](http://www.twinklebj.com)